



CYM IPSWICH

**YOUNG PEOPLE'S WORKER &
SCHOOL CHAPLAIN**

Recruitment Pack
May 2022

Hello!

Thank you so much for your interest in our Young People's Worker and School Chaplain position. This role is new to our team but comes at a critical moment in the history of the charity. We are in the process of moving our office base to a new location, where we will offer and provide many different activities and opportunities for children and young people. This particular post will sit within our 'School Chaplaincy' team but will be unique. If successful, you will work with, and for, a local church and your working hours will include delivering CYM Chaplaincy into the local Primary School. CYM will be the employer but the work will take place in the local church, community and school.

I encourage you to follow the link below and watch our latest vision video. This will give you a taste of who we are and what we do – but also, importantly, it will explain further about our future ideas and dreams: <https://bit.ly/cymvision>

I hope that you will find the necessary information within this pack to help you discern if it is right for you to apply for this role. Please be assured that the Trustees and team at CYM are praying for this process and we take very seriously the responsibility of getting this appointment correct. We want to find the right person for this exciting role!

You will find some information about our vision and values in this pack and I suggest that you take your time looking through these – I believe that these will help you decide if you should apply for this opportunity. The vision and values for the charity are very important to us and we believe that they form a crucial part of the culture that we always try to create; a place where all are welcome, a place that feels like family and a place where our collective heart is to serve others through the projects that we offer.

I also encourage you to look at our website, c-y-m.org.uk, and our social media pages. These will give you a flavour of the work that we are currently engaging in and you will see some of our brilliant team in action. Please also ensure that you visit the websites/social media pages of the Church and Primary School as all work will be delivered in these settings.

Please know that I will be only too happy to meet with you informally before you apply if that is helpful. Thank you for considering this role. Thank you for being interested in our work and I look forward to hearing from you if you feel that you could be the right person for this role at CYM.



Simon Scott - Director, CYM Ipswich



INVESTING IN GENERATIONS. INSPIRED BY JESUS.

Bringing wholeness through safe spaces.

We are a team of passionate Christians who want to see positive change in all children and young people. Formed in 1983, we are always looking to develop nearly four decades of work across the schools in our town. We are a para-church organisation, working in partnership with local churches and organisations for the better of the children and young people in our town. Our key projects are the pioneering 'School Chaplaincy' project and also providing residential opportunities for young people, in various forms. The residential area of our work is currently being re-imagined and this is a very exciting season for our charity. Our vision is to ensure that every child and young person in our town has access to a positive and passionate Christian presence in their school, or through activities provided in a residential setting.

We want them to see Jesus clearly in us.

Our vision and values are important to us and we will be looking for these characteristics in you! Please take your time to read them on the following pages and ask us any questions about them in advance.

Our work is overseen by a board of volunteer Trustees and led on a day-to-day basis by Simon, our Director. See our team page towards the end of this pack for the current team.



WHY WORK FOR CYM?

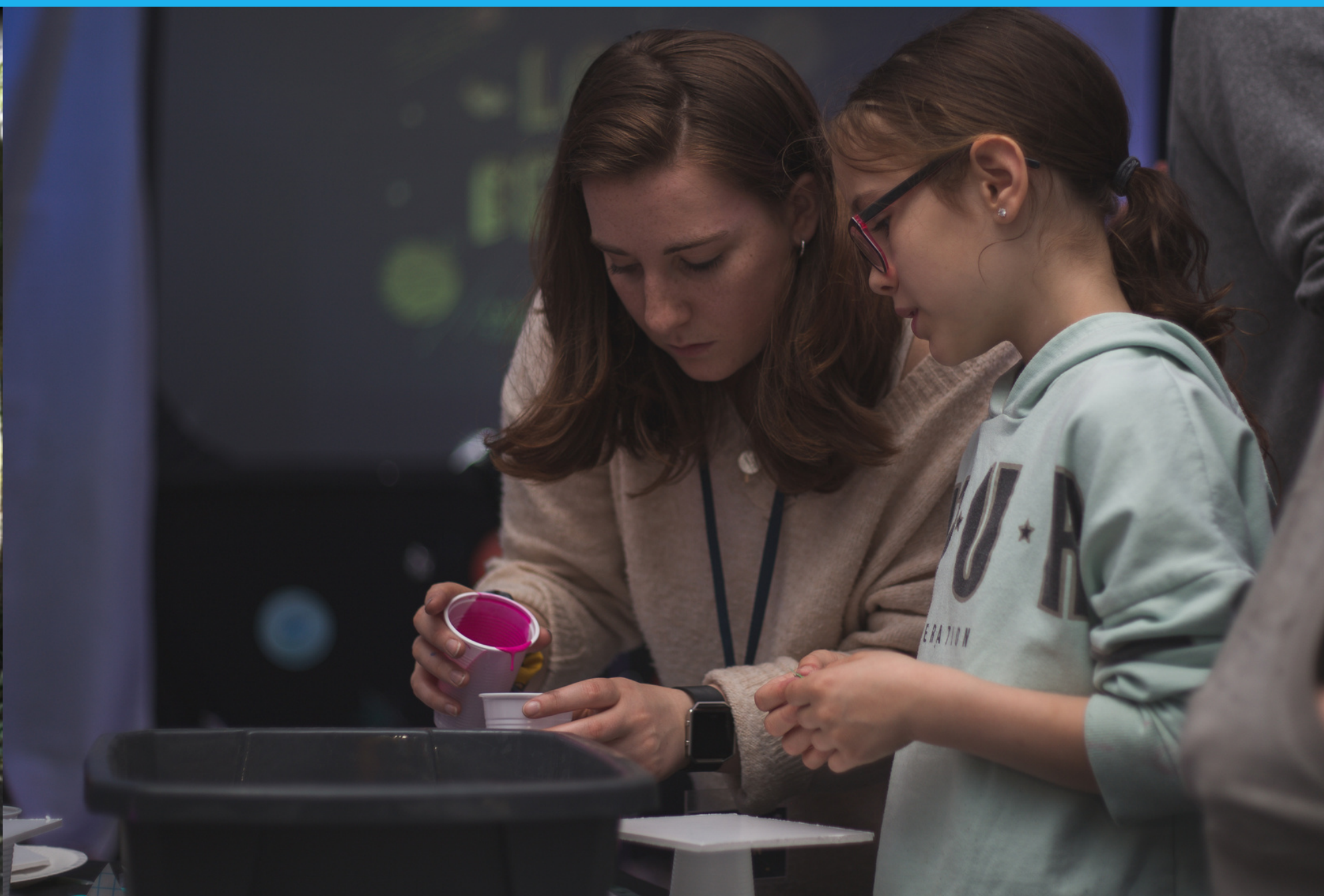
We are passionate about our work - sharing the love of Jesus with the children and young people that we meet. You will be joining a team of committed and dedicated individuals who love to come together regularly.

We see our personal faith as critical to our work. Therefore, you will be given time to pause, reflect and worship with the team, as well as benefiting from the wisdom and experience of mentors and coaches.

This role will be based in St. Margaret's Church and Primary School, located near each other in central Ipswich. You will be expected to become a part of the worshipping community at the church if you are offered this position.

We will provide opportunities to share our work with supporters, churches and other organisations. There will be times for retreating together and going to events and conferences as we love to spend time together as the 'CYM family'.

We are looking for a passionate, proactive person with a heart for community and a willingness to share Jesus with others. You'll need to be adaptable, able to think creatively and have the drive to make things happen within our organisation! All of this will come from a heart of wanting to share the love of Jesus with those you meet and serve.



OUR VISION

INVESTING IN GENERATIONS. INSPIRED BY JESUS.

Our work spans the generations. Whilst we are a children's and youth work charity, we recognise that all areas of our work see us engaging with different generations. That could be parents, grandparents, family members or friends. It will be members of school staff; in the school setting or when we provide activities for people to attend. It will be in the local community where we share our work and with the variety of people that we meet in church settings too. We see our work as investment. Sowing seeds. Building relationships. Our dream for school-based work is to have a School Chaplain in every school in Ipswich, and beyond. Our new residential centre, and work from it, will enable us to reach even more children and young people and the adults who work with them or care for them. Our work is inspired by Jesus, his teachings and his character. We want everyone we come into contact with to see a glimpse of Jesus in us.

BRINGING WHOLENESS THROUGH SAFE SPACES.

We believe that our work provides safe spaces for the young people we meet. We also believe that we can provide more of these. That could be a Chaplain mentoring in a school, or sitting on a street corner chatting. It could be providing a space for a member of staff to share worries or concerns or it could be the activities that we provide from our new residential centre.

We see 'wholeness' as being at least three different aspects; physical, mental and spiritual. We aim to provide support in all three areas.

OUR VALUES

The values below are crucial for the culture of our organisation and team. We believe that working closely to these values will enable us to live out the vision and mission for CYM. They also inspire passion in our work. We will be looking closely to see how you demonstrate these qualities and characteristics!

We are...

JOYFUL

CREATIVE

GENEROUS

COLLABORATIVE

BASIS OF FAITH

This role requires the post-holder to be able to share a Christian viewpoint and/or perspective and be in a position to support young people as they explore the Christian faith. It is important that the post-holder is a committed Christian and can clearly share the Christian ethos of the charity in their work. We believe in:

- 1. The one true God who lives eternally in three persons – the Father, the Son and the Holy Spirit.*
- 2. The love, grace and sovereignty of God in creating, sustaining, ruling, redeeming and judging the world.*
- 3. The divine inspiration and supreme authority of the Old and New Testament Scriptures, which are the written Word of God – fully trustworthy for faith and conduct.*
- 4. The dignity of all people, made male and female in God's image to love, be holy and care for creation, yet corrupted by sin, which incurs divine wrath and judgment.*
- 5. The incarnation of God's eternal Son, the Lord Jesus Christ – born of the virgin Mary; truly divine and truly human, yet without sin.*
- 6. The atoning sacrifice of Christ on the cross: dying in our place, paying the price of sin and defeating evil, so reconciling us with God.*
- 7. The bodily resurrection of Christ, the first fruits of our resurrection; his ascension to the Father, and his reign and mediation as the only Saviour of the world.*
- 8. The justification of sinners solely by the free grace of God through faith in Christ.*
- 9. The ministry of God the Holy Spirit, who leads us to repentance, unites us with Christ through new birth, empowers our discipleship and enables our witness.*
- 10. The Church, the body of Christ both local and universal, the priesthood of all believers - given life by the Spirit and endowed with the Spirit's gifts to worship God and proclaim the gospel, promoting justice and love.*
- 11. The personal and visible return of Jesus Christ to fulfil the purposes of God, who will raise all people to judgement, bring eternal life to the redeemed and eternal condemnation to the lost, and establish a new heaven and new earth.*

YOUNG PEOPLE'S WORKER & SCHOOL CHAPLAIN

Work base: St. Margaret's Church and St. Margaret's Primary School, Bolton Lane, Ipswich

Hours: 37.5 hours per week (flexibility for evening and weekend work will be required)

Salary: £23,500 per annum

Holiday entitlement: 25 days per annum, plus UK Bank Holidays

Contract Length: Initial 2 year post

Start Date: September 2022



ST. MARGARET'S CHURCH

St Margaret's Church is situated on the edge of Ipswich town centre but is very much a 'parish' church. We work closely with our Church School across the road, and have links to nearby independent and state secondary schools. We have a variety of weekly services including Sunday 8am, 9:30am and 11am. Our 9:30am 'Rise and Shine' service attracts a number of young families, as well as others young at heart who enjoy craft activities and appreciate being led in song by our Music Group. The 11am services are mostly communion, with musical support from organ and choir. We work to a monthly pattern that also includes communion and band at 9:30am, allowing the Music group to get to the 11am service. We hope to re-start monthly Café Church services in our nearby hall, where we combine a light breakfast with informal worship. We have associated Scout, Rainbow, Brownie and Guide groups and before-and-after school care, who all operate from our Church Centre.

Our goal is that this new post will further develop our links with school, extend our work with children and increase our ability to retain engagement as children grow in age and faith.

Church website: <https://www.stmargaretsipswich.org.uk/>

Church social media:

[Facebook.com/StMargaretsIpswich](https://www.facebook.com/StMargaretsIpswich)



ST. MARGARET'S PRIMARY SCHOOL

'Transforming lives by living and learning together in God's love'

Jo Gunn has been in headship for 10 years and has a clear vision for the school to be grounded in Christian values and share the love and joy of Christ. We were given recognition of 'excellent' from SIAMS in 2019 for the work we do in school and beyond. St Margaret's Primary works closely with local schools, charities and churches, attending St Margaret's Church weekly for our school service.

The school aims to serve its community by providing an education of the highest quality within the context of Christian belief and practice. It encourages an understanding of the meaning and significance of faith and promotes Christian values through the experience it offers to all its pupils.

The work in the school will partner closely with the local church and will also build upon previous Chaplaincy work in previous years.

School website: <https://www.stmargaretsipswich.org/>



St Margaret's CEVA Primary School

Transforming lives by living and learning together in God's love

CYM IPSWICH

Staff team - 2022/2023



TRUSTEES

*Graham Abbott, Mandy Stone, Matt Cornwell,
Matt Levett, Tristan Clee & Chris Ginn*



ANT CARTWRIGHT

*Chaplain to Chantry Academy
& CYM Team Chaplain*



HENRY MATTER

Office & Operations Manager



KORI DORRINGTON

*Chaplain to St. John's &
St. Matthew's Primary Schools*



MARK ETHERIDGE

*Chaplain to Lindbergh and Parkside
Academies*



BETH AMBROSE

*Chaplain to Ipswich Academy
& Community Youth Worker*



JOSH AMBROSE

Residential Ministry Lead



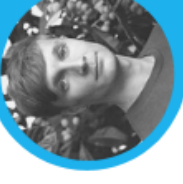
LORRAINE NOBLE

*Chaplain to ONE 6th Form
Centre*



SIMON SCOTT

Director



DANIEL GOODWIN

Chaplain to Stoke High School



JOSH GODDARD

Chaplain to Orimiston Academy



LUCY ANSTEY

Assistant Director



URSULA FRENCH

Finance & Admin. Assistant

*Investing in generations. Inspired by Jesus.
Bringing wholeness through safe spaces.*



Please email completed applications to:

Simon Scott, Director

simon@c-y-m.org.uk

Closing Date: Friday 3rd June, 2022

*Interviews will take place in June 2022 and
may be subject to Covid-19 regulations.*